

Main display area, Styling Auditorium

GM Photo by Forynk

A TOUR OF THE GM TECHNICAL CENTER INTERIORS

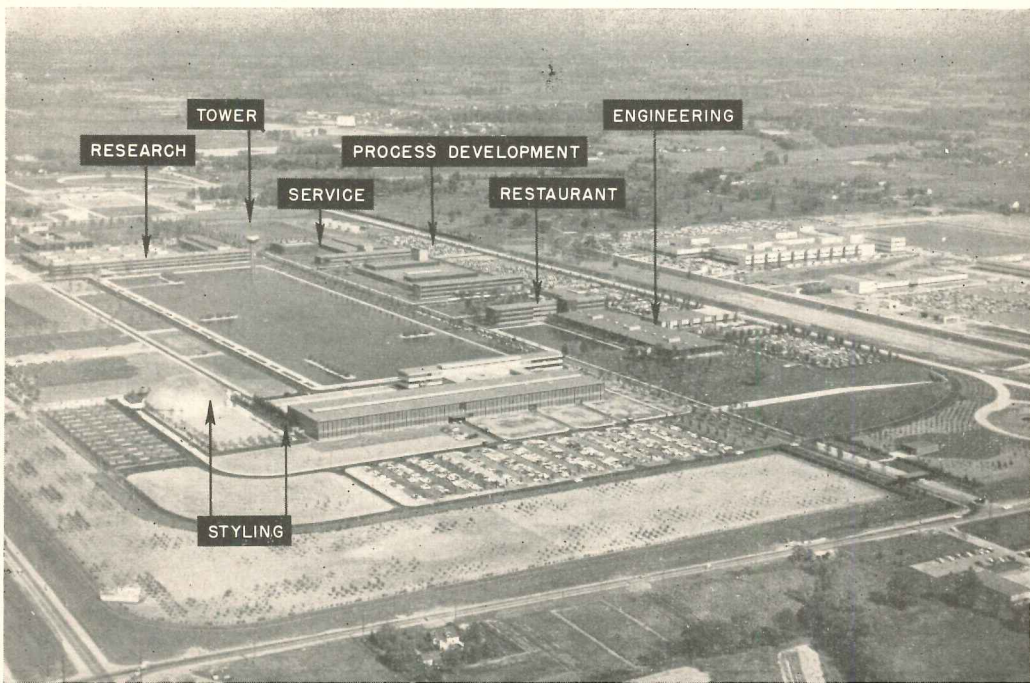
*General Motors Technical Center, Mich., Eero Saarinen & Associates, Architects
Smith, Hinchman & Grylls, Architect-Engineer; Bryant & Detwiler Co., General
Contractor; Argonaut Realty Division of GM, Field Supervision; Thomas D. Church
& Edw. A. Eichstedt, Landscape Architects; Bolt, Beranek & Newman, Acoustic
Consultants; Richard Kelly, Exterior Lighting Consultant*

THESE PICTURES have been chosen as representative of the character achieved in the principal interior areas of the Center, due to be formally dedicated this month.

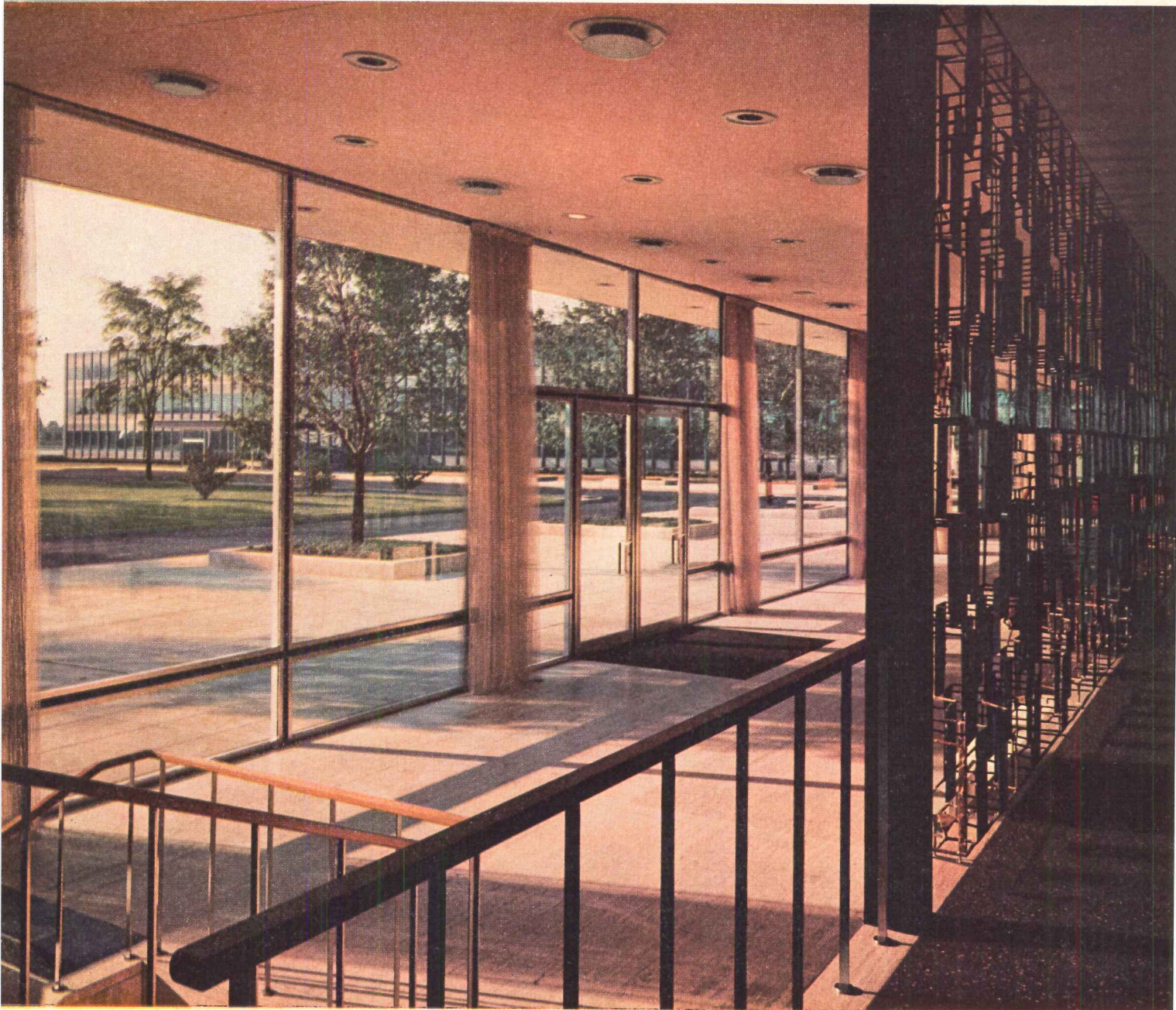
The **Styling Auditorium**, one of the most significant spaces, is covered by a double dome. The outer (structural) thin shell, of $\frac{3}{8}$ in. welded steel plates, spans 186 ft, rises 65; supports the inner acoustical shell of $\frac{1}{8}$ in. perforated metal, backed up by terraced layers of acoustic fill. 225 KW of light from incandescent and mercury vapor lamps provides 140 FC of almost totally diffuse illumination.

Lobby of Process Development Administration Building

© Ezra Stoller



GM Photo by LaRue



INTERIORS—GENERAL MOTORS TECHNICAL CENTER

Lobby of the Process Development Administration Building features architect-designed furniture, upholstered in white plastic and supported on stainless frames. The metal reception desk is of special design. Carpeting is a nubby-textured mixture of tan, beige and ivory, designed and woven by Marianne Stengel. A skylight between lobby and building visually separates these elements; accents the planting.

In the **Central Restaurant Building**, a decorative metal screen by Bertoia separates lobby and dining areas. The lobby floor and stair bulkheads are travertine, the handrail teak on stainless uprights. The dining area, raised for better view, is floored in black terrazzo. The glass curtains are natural color fishnet.

Auditorium, Process Development Administration Building



Library, Research Administration Building





INTERIORS—GENERAL MOTORS TECHNICAL CENTER

The Process Development Auditorium is essentially a freestanding acoustical shell of basswood set within a royal blue cube formed by fabric covered walls and carpeted floor. The shell works so well the PA system is used only for sound film.

In the **Research Library**, space along the outer wall becomes a series of reading lounges opening to the shelves. A color scheme of light and dark grays creates a serene atmosphere. The aluminum and milky-white plastic ceiling combines lighting, sprinkler heads, high-velocity air diffusers, and acoustical baffles.

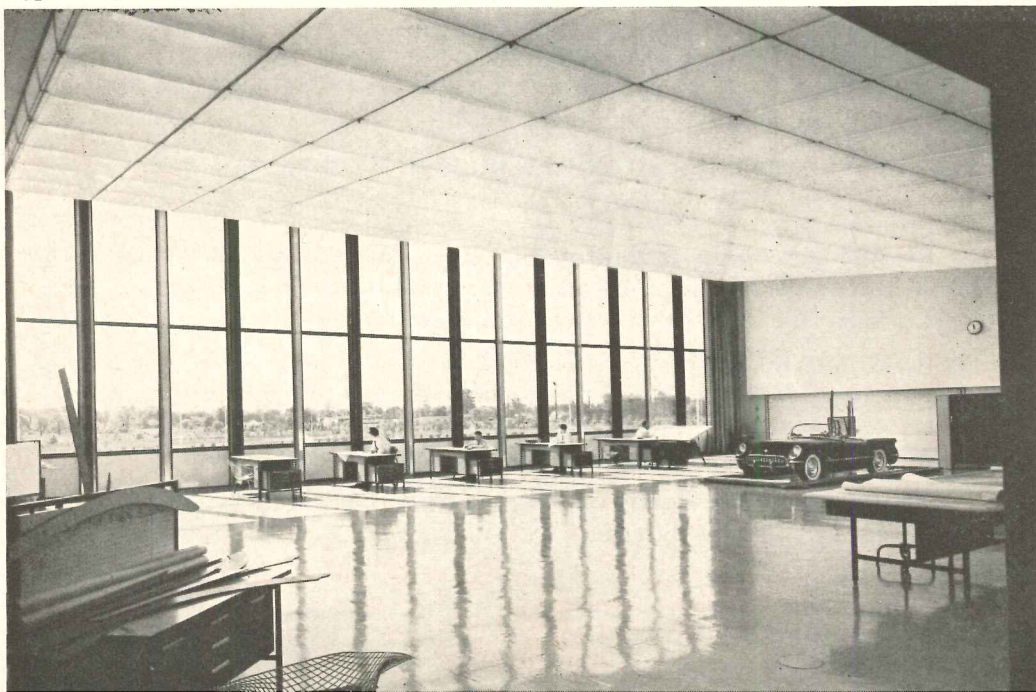
This **Executive Office Lobby** combines an interesting variety of materials with taste; features a Marianne Strengel "rug within a rug" to define the waiting area.

Cafeteria, Styling Administration Building

GM Photo by LaRue



Typical Styling Studio



© Ezra Stoller



INTERIORS—GENERAL MOTORS TECHNICAL CENTER

The Styling Cafeteria contains off-white table tops, black plastic chairs on chrome legs, orange plastic banquettes, and a floor of alternating 2 in. strips of cream and orange colored vinyl plastic. Glass curtains are natural color fishnet.

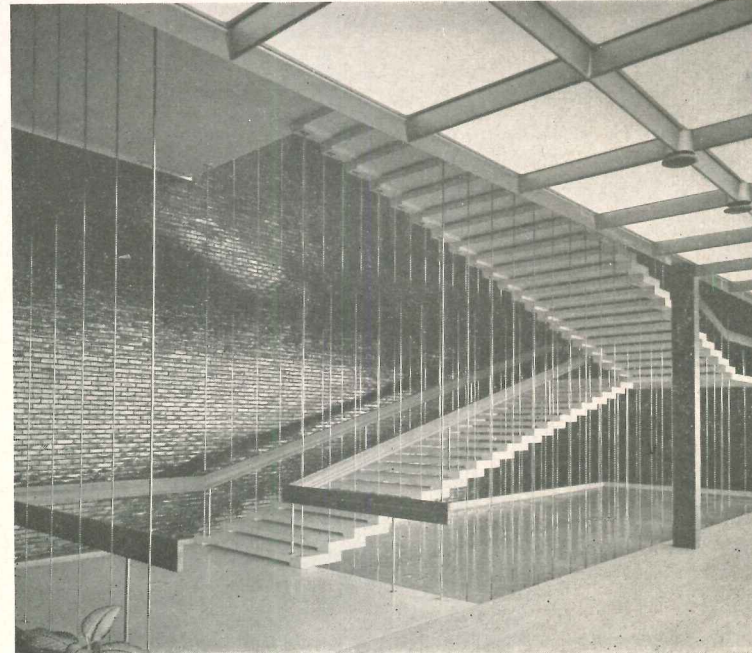
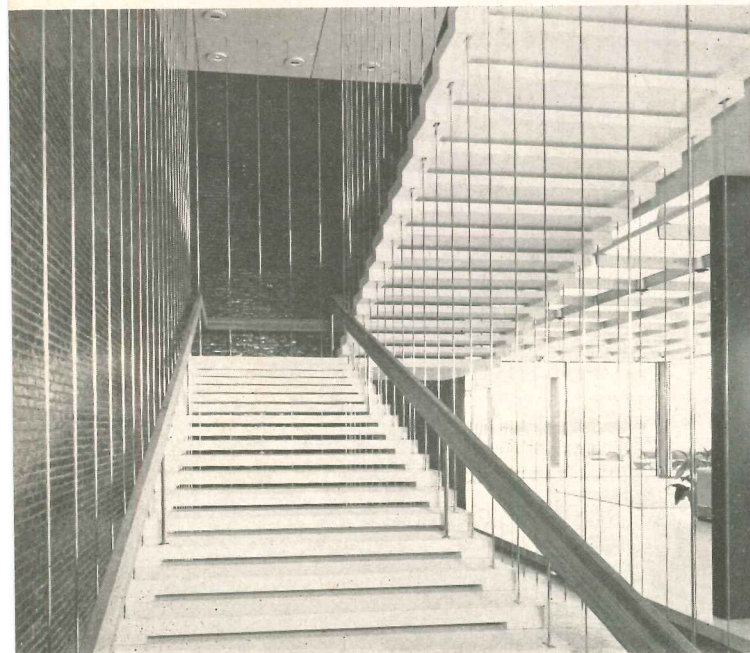
The Styling Studio, typical of the 16 in the section, is about 55 by 80; incorporates a large space for studying several mockups or actual vehicles. Four sets of sliding blackboards and corkboards — with a traveling seat — form the end walls.

In the **Research Cafeteria**, the columns are matte black tile, the floor is white terrazzo, the walls are blue-glazed brick, and the cafeteria-line screen is made of 21 varieties of wood. Suspended ceiling baffles are aluminum, gold-anodized.

Service Administration Building Stair



Research Administration Building Stair



Styling Administration Building Stair

Top photos, © Ezra Stoller. Lower, GM Photos by LaRue

INTERIORS — GENERAL MOTORS TECHNICAL CENTER

Important Stairs have been treated as free-standing technological sculpture. That in **Service Administration** consists of travertine treads in metal pans, held by a continuous spinal beam of structural steel painted white. In **Research Administration**, the granite treads "float" in a converging double cone of stainless steel tension rods. Lateral stability comes both from shear blocks and from the compression ring formed by the stair proper. The **Styling Lobby** stair features white terrazzo treads slung within a vertical pattern of stainless steel rods against a black glazed brick wall. The floor and reflecting pool are of travertine; the handrail of teak. Blue underwater lights add color to the shimmer of the circulating water.